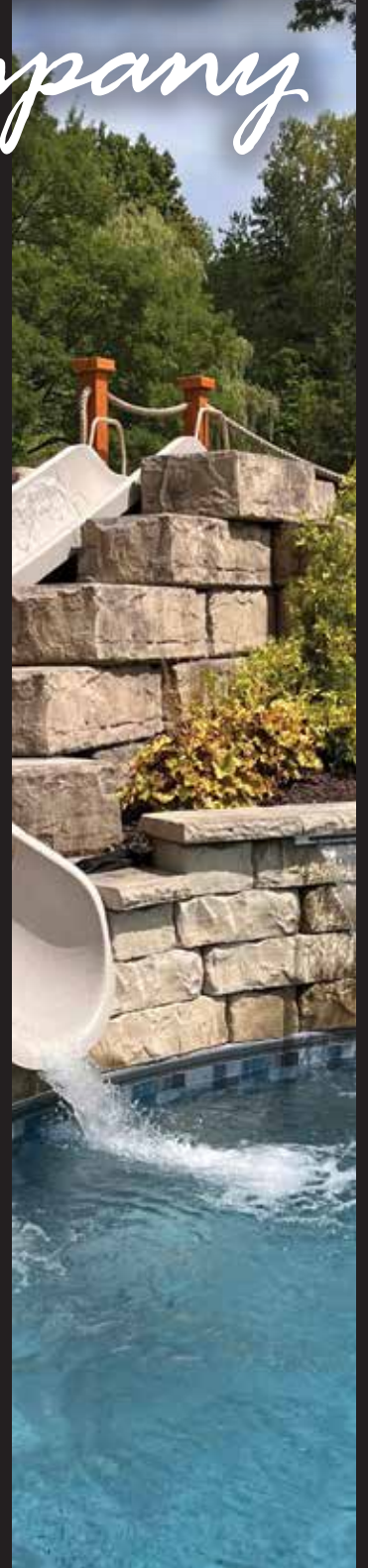


# R.I. *Lampus* Company



HARDSCAPE COLLECTION

# ICON LEGEND



Products are manufactured using Proguard technology.



Products are manufactured using PG Plus technology.



Products are able to be installed as permeable paving stones.



To prevent cosmetic damage, do not use deicing agents.



Product falls under dry-cast product warranty.



Product falls under wet-cast product warranty.



Use of a plate compactor with protective pad or roller compactor is recommended.



The use of compaction equipment is not recommended and may void warranty.

<b>PROJECT INSPIRATION.....</b>	<b>02</b>
<b>PAVING STONES.....</b>	<b>22</b>
CLARION.....	24
GRANDVIEW™.....	26
GRANDVIEW™ 6 x 12 *NEW FOR '26*.....	26
HOLLAND PROGUARD & PG PLUS.....	28
LIGONIER PG PLUS.....	30
MARMIRO STONES® PAVERS.....	32
STRATFORD PG PLUS.....	34
PAVER TECHNOLOGY.....	35
<b>WALLS.....</b>	<b>36</b>
CASTLEROK®.....	38
COUNTRY STONE.....	40
ROSETTA® GRAND LEDGE.....	42
ROSETTA® KODAH.....	44
ROSETTA® OUTCROPPING.....	46
VERSA-LOK® STANDARD.....	48
VERSA-LOK® HARMONY.....	50
VERSA-LOK® SQ. FT. BLOCK.....	51
MAGNUMSTONE®.....	52
<b>CAPS &amp; COPING.....</b>	<b>54</b>
C CAPS & C-2 CAPS.....	56
DOUBLE BULLNOSE CAPS.....	58
LIMESTONE COLUMN CAPS.....	59
MARMIRO STONES® COPING.....	60
ROSETTA® DIMENSIONAL COPING.....	61
<b>STEPS &amp; STEPPING STONES.....</b>	<b>62</b>
CABIN ROCK™.....	64
LANDING STONE.....	65
OVERLOOK STEPS *NEW FOR '26*.....	65
ROSETTA® DIMENSIONAL STEPS.....	66
ROSETTA® IRREGULAR STEPS.....	68
<b>LAMPUS ONLINE.....</b>	<b>70</b>
<b>LAMPUS TRAINING PROGRAM.....</b>	<b>72</b>
<b>DESIGN SOFTWARE.....</b>	<b>74</b>
<b>PRODUCT RESOURCES.....</b>	<b>76</b>
<b>EDGING ACCENTS.....</b>	<b>77</b>
<b>COLOR SWATCHES.....</b>	<b>78</b>
<b>PRODUCT WARRANTY.....</b>	<b>80</b>
<b>100 YEARS.....</b>	<b>81</b>



PRODUCTS SHOWN: MARMIRO STONES® PAVERS - TERRA TRAVERTINE,  
CASTLEROK - DESERT, DOUBLE BULLNOSE CAPS - ESPRESSO

# PROJECT INSPIRATION

Viewing completed hardscape projects can be a fantastic source of inspiration for your own design. These images showcase a variety of materials, styles, and layouts, providing a clearer idea of what resonates with you. Exploring different designs, color combinations, patterns, and features will help you create a cohesive and visually appealing outdoor space that meets your specific wants and needs.







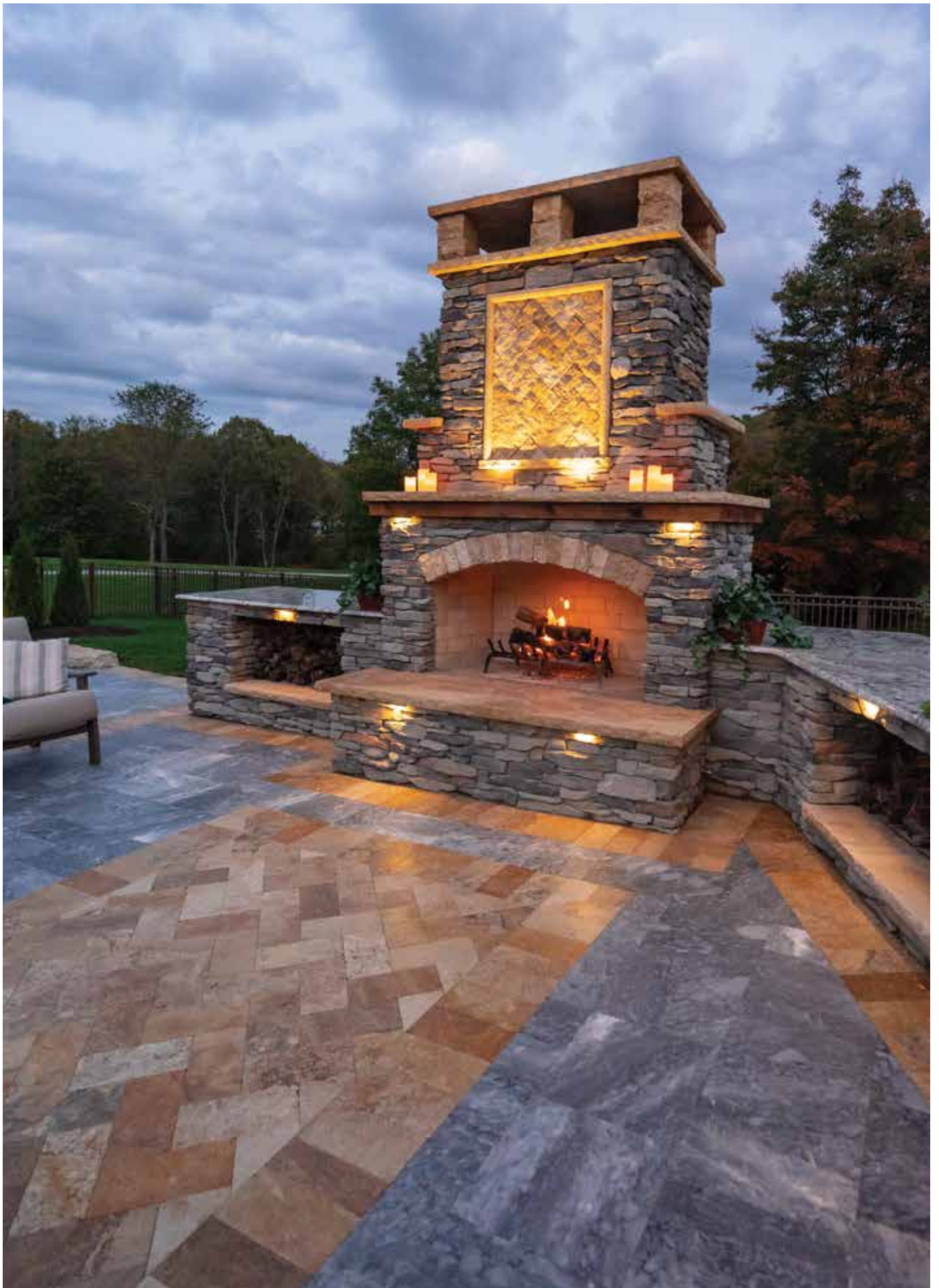








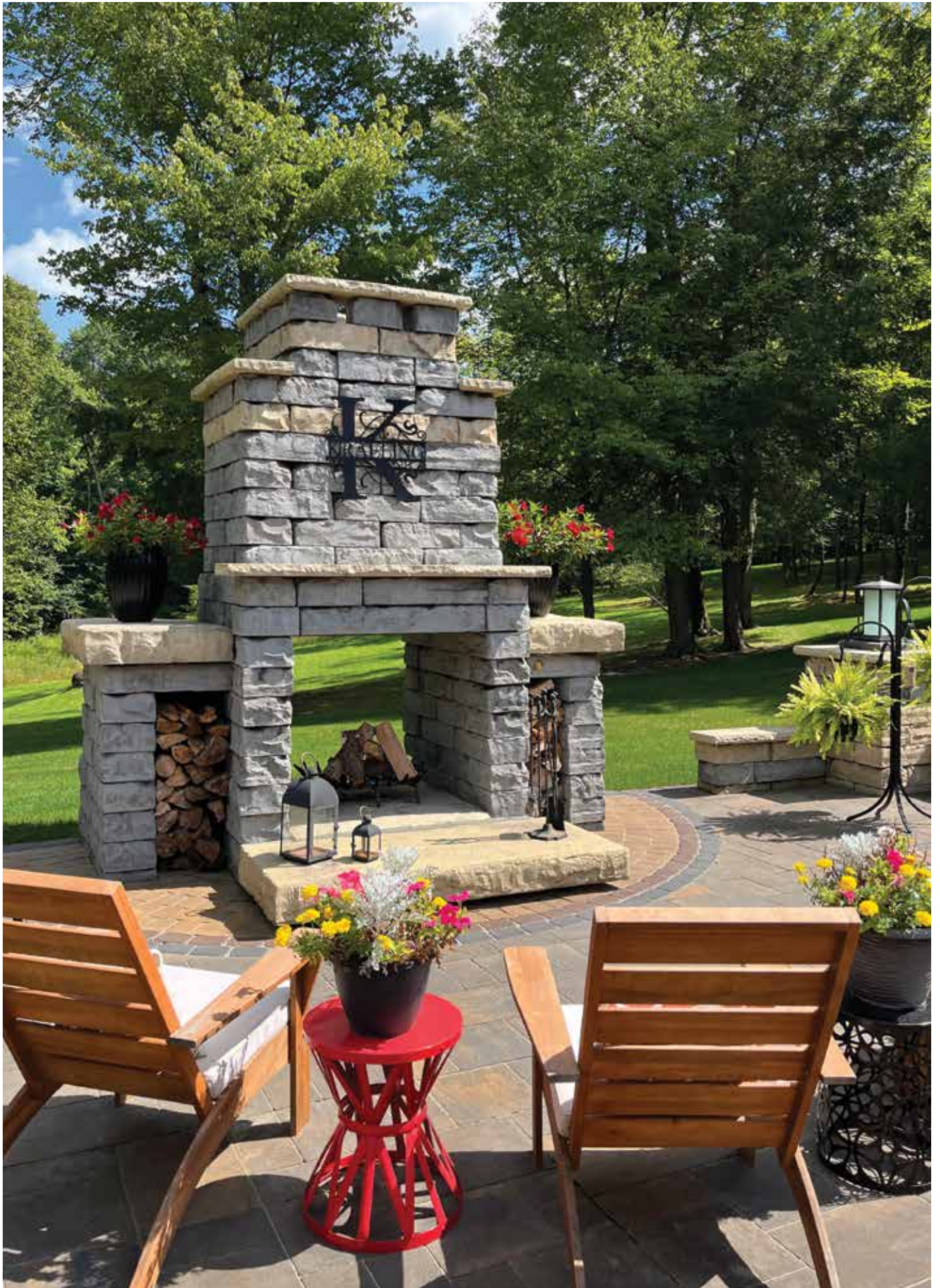
























PRODUCTS SHOWN: CLARION - SLATE, HOLLAND PG PLUS - ANTHRACITE



# PAVING STONES

CLARION.....	24
GRANDVIEW™ .....	26
GRANDVIEW™ 6 x 12 <sup>*NEW FOR '26*</sup> .....	26
HOLLAND PROGUARD & PG PLUS...	28
LIGONIER PG PLUS.....	30
MARMIRO STONES® PAVERS.....	32
STRATFORD PG PLUS.....	34
PAVER TECHNOLOGY.....	35



CLARION - SLATE

ALSO SHOWN: HOLLAND PG PLUS - ANTHRACITE, ROSETTA® KODAH - CHARCOAL, ROSETTA® DIMENSIONAL COPING - MOUNTAIN RUSTIC





GRANDVIEW™ - ALLEGHENY  
ALSO SHOWN: LIGONIER PG PLUS - ANTHRACITE



**GRANDVIEW™ - WHITE BIRCH**

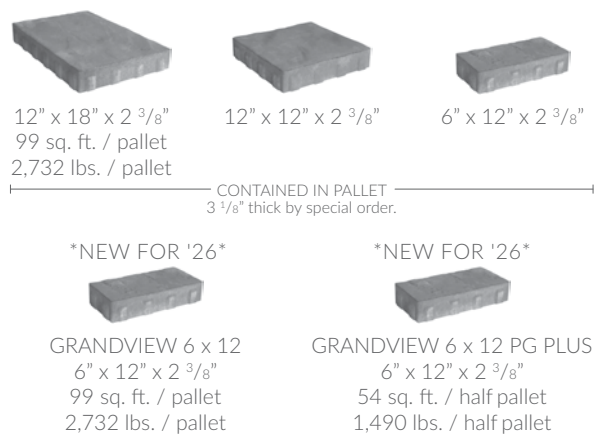
ALSO SHOWN: CLARION - WHITE BIRCH, STRATFORD PG PLUS - ESPRESSO, LIGONIER PG PLUS - ESPRESSO, C CAPS - WHITE BIRCH

# GRANDVIEW™ & GRANDVIEW™ 6 x 12

////////// COLORS \\\\\\\\\\\\\\\\\\\



////////// SHAPES \\\\\\\\\\\\\\\\\\\



12" x 18" x 2 3/8"  
99 sq. ft. / pallet  
2,732 lbs. / pallet

12" x 12" x 2 3/8"

6" x 12" x 2 3/8"

CONTAINED IN PALLET  
3 1/8" thick by special order.

\*NEW FOR '26\*

\*NEW FOR '26\*

GRANDVIEW 6 x 12  
6" x 12" x 2 3/8"  
99 sq. ft. / pallet  
2,732 lbs. / pallet

GRANDVIEW 6 x 12 PG PLUS  
6" x 12" x 2 3/8"  
54 sq. ft. / half pallet  
1,490 lbs. / half pallet

\* Grandview Ridgetop is also available in Smooth Finish.  
† Grandview 6 x 12 only available in Allegheny & Slate.  
‡ Grandview 6 x 12 PG Plus only available in Anthracite & Espresso.  
Grandview Plaza is available special order.

The colors of products shown are for reference only. Actual colors may vary. Color selections should always be made from actual product samples.



HOLLAND PG PLUS - ANTHRACITE

ALSO SHOWN: CLARION - SLATE, ROSETTA® DIMENSIONAL COPING - MOUNTAIN RUSTIC

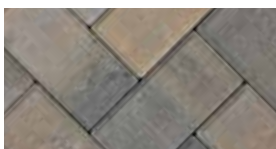


HOLLAND PG PLUS - ANTHRACITE  
ALSO SHOWN: COUNTRY STONE - ANTHRACITE

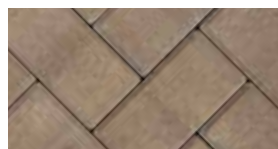


# HOLLAND PROGUARD & PG PLUS

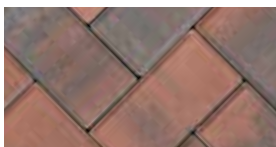
////////// COLORS \\\\\\\\\\\\\\\\\\\



ALLEGHENY



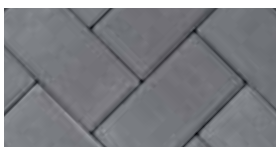
DESERT



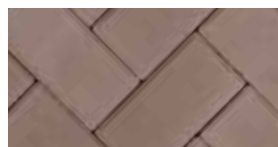
SARATOGA



SLATE



ANTHRACITE\*



ESPRESSO\*

////////// SHAPES \\\\\\\\\\\\\\\\\\\



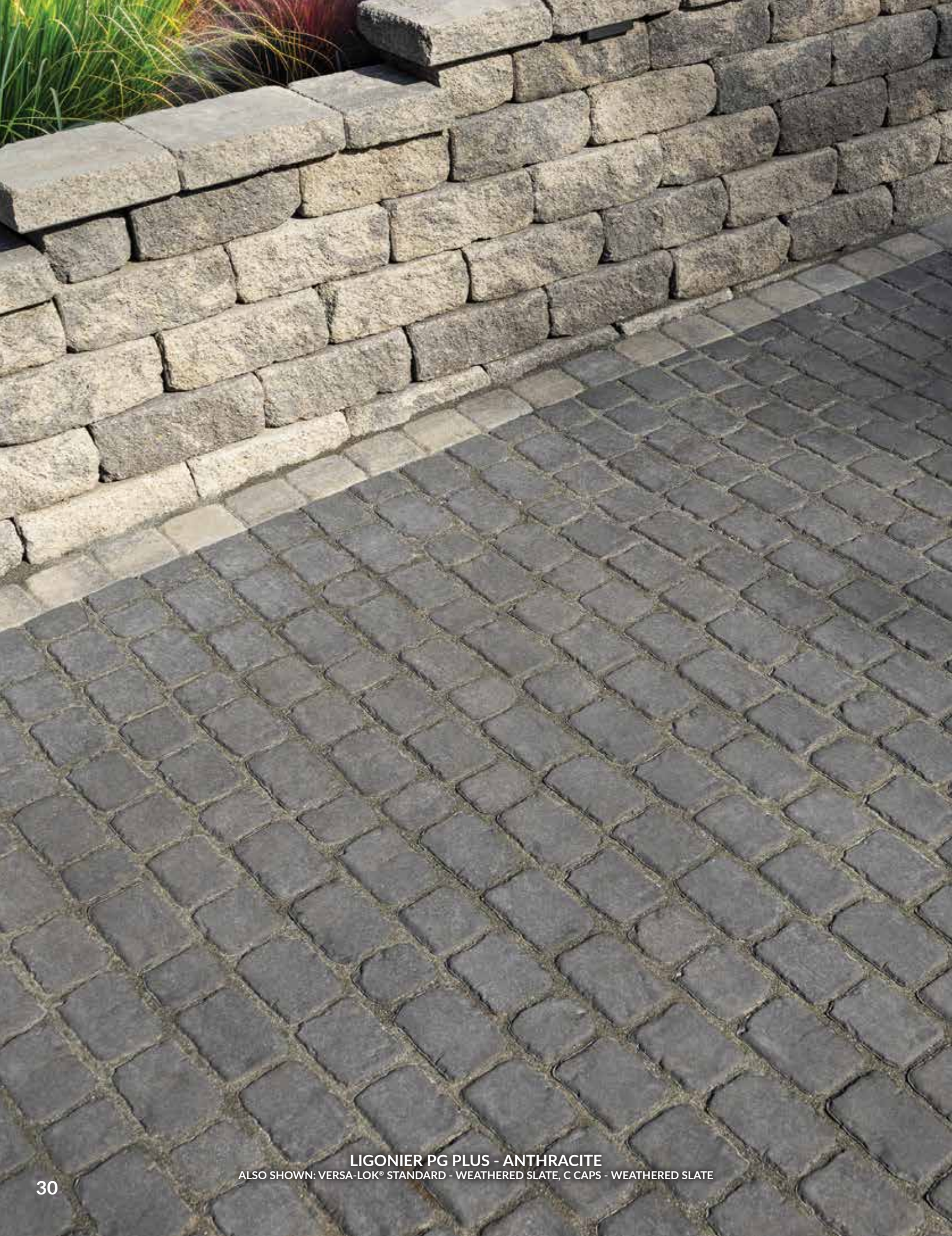
PROGUARD: 3 <sup>15</sup>/<sub>16</sub>" x 7 <sup>7</sup>/<sub>8</sub>" x 2 <sup>3</sup>/<sub>8</sub>"  
105 sq. ft. / pallet  
2,920 lbs. / pallet  
3 <sup>1</sup>/<sub>8</sub>" thick by special order.



PG PLUS: 3 <sup>15</sup>/<sub>16</sub>" x 7 <sup>7</sup>/<sub>8</sub>" x 2 <sup>3</sup>/<sub>8</sub>"  
SOLDIER: 90 ln. ft. / half pallet  
SAILOR: 180 ln. ft. / half pallet  
58.3 sq. ft. / half pallet  
1,622 lbs. / half pallet

\* Anthracite and Espresso are only available in PG Plus Half-Pallets.

The colors of products shown are for reference only. Actual colors may vary. Color selections should always be made from actual product samples.



LIGONIER PG PLUS - ANTHRACITE

ALSO SHOWN: VERSA-LOK® STANDARD - WEATHERED SLATE, C CAPS - WEATHERED SLATE





MARMIRO STONES® - CREMA EDA® MARBLE  
ALSO SHOWN: MARMIRO STONES® - DEEP BLUE® MARBLE, MARMIRO STONES® BULLNOSE COPING - CREMA EDA®





# PAVER TECHNOLOGY



## SMOOTHER SURFACE TEXTURE AND WEAR RESISTANCE WITH PROGUARD

Proguard is an R.I. Lampus Company proprietary mix design and production process with a tight, attractive surface that more closely resembles natural stone. This manufacturing process combines a traditional base mixture of coarse aggregates with a surface mixture of fine, durable materials. In addition to durability, the surface layer keeps the larger aggregates from exposure over the life of the paver, making Proguard pavers significantly more wear resistant.



## ENHANCED SURFACE PROTECTION AND BOLDER COLORS WITH PG PLUS

As an addition to the Proguard system, PG Plus incorporates integral admixtures and an in-line treatment that is applied during the manufacturing process. This affords you longer-lasting benefits, unlike topical sealers applied after installation. The application of this integral system allows for bolder colors, fade resistance, stain resistance, and greater protection from environmental effects like acid rain. In addition to the direct product benefits, you can also rest easy knowing that PG Plus is an environmentally friendly, water-based system.





PRODUCTS SHOWN: ROSETTA® OUTCROPPING - CHARCOAL

A photograph of a multi-tiered stone retaining wall in a garden. The wall is constructed from large, grey, rectangular stone blocks. The background shows a hillside with various green plants and trees. In the foreground, there are some green plants and a small, dark, conical garden lamp on a thin pole.

# WALLS

CASTLEROK® .....	38
COUNTRY STONE.....	40
ROSETTA® GRAND LEDGE.....	42
ROSETTA® KODAH.....	44
ROSETTA® OUTCROPPING.....	46
VERSA-LOK® STANDARD.....	48
VERSA-LOK® HARMONY.....	50
VERSA-LOK® SQ. FT. BLOCK....	51
MAGNUMSTONE®.....	52



CASTLEROK® - ALLEGHENY  
ALSO SHOWN: GRANDVIEW™ - SLATE





**COUNTRY STONE - BLACK WALNUT**

ALSO SHOWN: COUNTRY STONE - ANTHRACITE, LIMESTONE COLUMN CAP - NATURAL





ROSETTA® GRAND LEDGE - MOUNTAIN RUSTIC

ALSO SHOWN: ROSETTA® DIMENSIONAL STEPS - MOUNTAIN RUSTIC, LANDING STONE - MOUNTAIN RUSTIC



ROSETTA® GRAND LEDGE - MOUNTAIN RUSTIC



# ROSETTA® GRAND LEDGE

////////// COLORS \\\\\\\\\\\



CHARCOAL



MOUNTAIN RUSTIC

////////// SHAPES \\\\\\\\\\\



72" x 20" x 12"



60" x 20" x 12"



48" x 20" x 12"



36" x 20" x 12"

18 sq. ft. / pallet  
4,000 lbs. / pallet  
CONTAINED IN PALLET



51" x 26" x 12"



46" x 21" x 12"



43" x 20" x 12"



35" x 24" x 12"

21 sq. ft. / pallet  
3,950 lbs. / pallet  
CONTAINED IN CORNER PALLET



54" x 20" x 12"



46" x 21" x 12"



43" x 20" x 12"



36" x 20" x 12"

15 sq. ft. / pallet  
3,590 lbs. / pallet  
CONTAINED IN COPING / FREESTANDING PALLET

The coloring process of our wet-cast products is designed to mimic a wide variation and range similar to natural stone. Color values and intensity will vary between blocks, pallets, and production runs. The colors of products shown are for reference only. Actual colors may vary. Color selections should always be made from actual product samples. All dimensions are nominal.



ROSETTA® KODAH - MOUNTAIN RUSTIC

ALSO SHOWN: ROSETTA® DIMENSIONAL STEPS - MOUNTAIN RUSTIC, ROSETTA® DIMENSIONAL COPING - MOUNTAIN RUSTIC



**ROSETTA® KODAH - MOUNTAIN RUSTIC**  
 ALSO SHOWN: ROSETTA® KODAH - CHARCOAL, GRANDVIEW™ - BLACK WALNUT, STRATFORD PG PLUS - ANTHRACITE & ESPRESSO



# ROSETTA® KODAH

////////// COLORS \\\\\\\\\\\



CHARCOAL



MOUNTAIN RUSTIC

////////// SHAPES \\\\\\\\\\\



42" x 10 1/2" x 6"



30" x 10 1/2" x 6"



21" x 10 1/2" x 6"



12" x 10 1/2" x 6"

21 face sq. ft. / pallet  
 2,400 lbs. / pallet  
 CONTAINED IN PALLET



CORNER  
 21" x 10 1/2" x 6"  
 31.5 face sq. ft. / pallet  
 2,400 lbs. / pallet



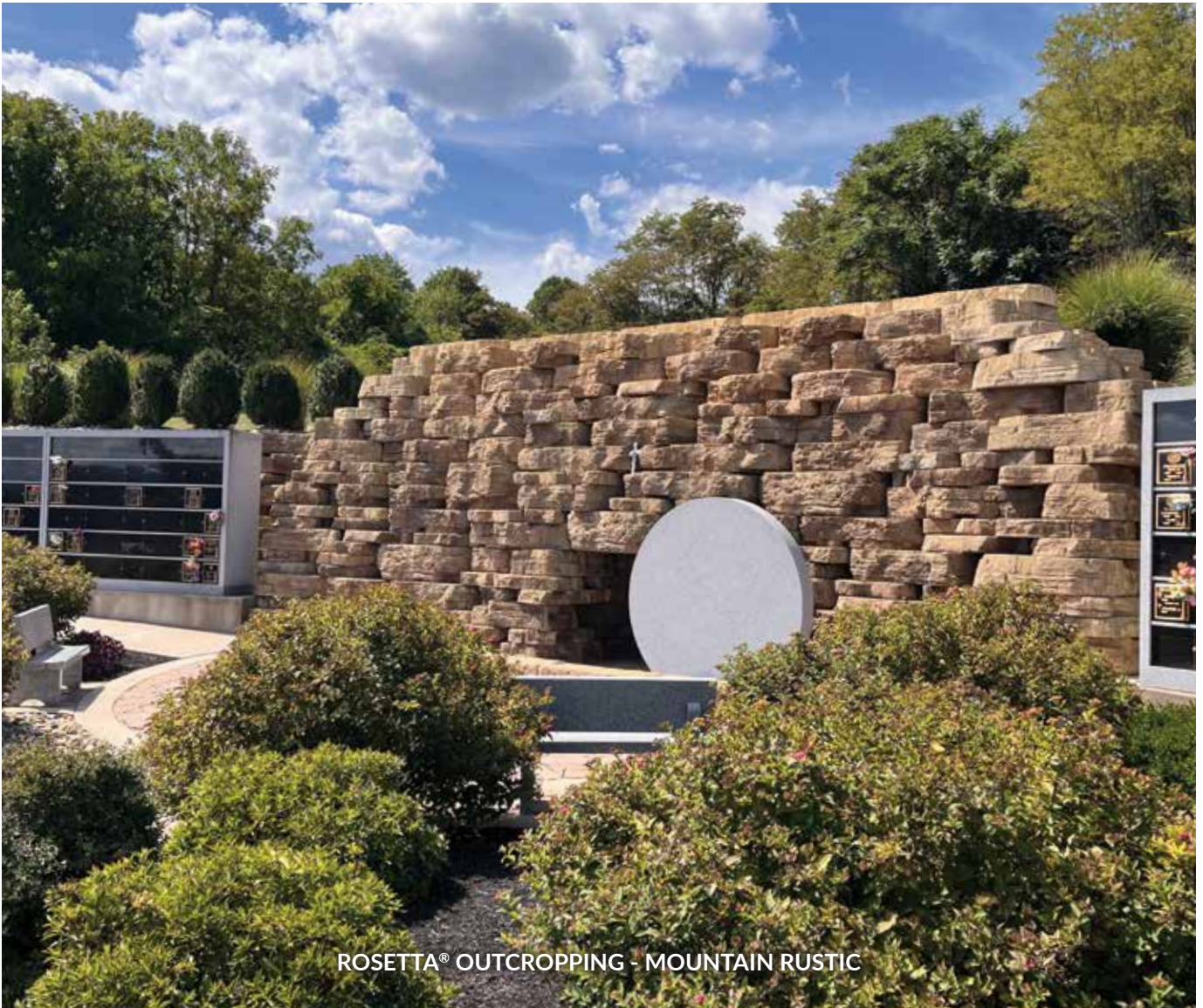
KODAH FIRE PIT  
 51" (+/-) x 18" fire pit  
 27" x 18" steel insert included  
 2,400 lbs. / pallet  
 (FULL PALLET OF CORNERS)

The coloring process of our wet-cast products is designed to mimic a wide variation and range similar to natural stone. Color values and intensity will vary between blocks, pallets, and production runs. The colors of products shown are for reference only. Actual colors may vary. Color selections should always be made from actual product samples. All dimensions are nominal.



**ROSETTA® OUTCROPPING - MOUNTAIN RUSTIC**

ALSO SHOWN: ROSETTA® 4' DIMENSIONAL STEPS - MOUNTAIN RUSTIC, MARMIRO STONES® PAVERS - TERRA TRAVERTINE



ROSETTA® OUTCROPPING - MOUNTAIN RUSTIC



# ROSETTA® OUTCROPPING

////////// COLORS \\\\\\\\\\\

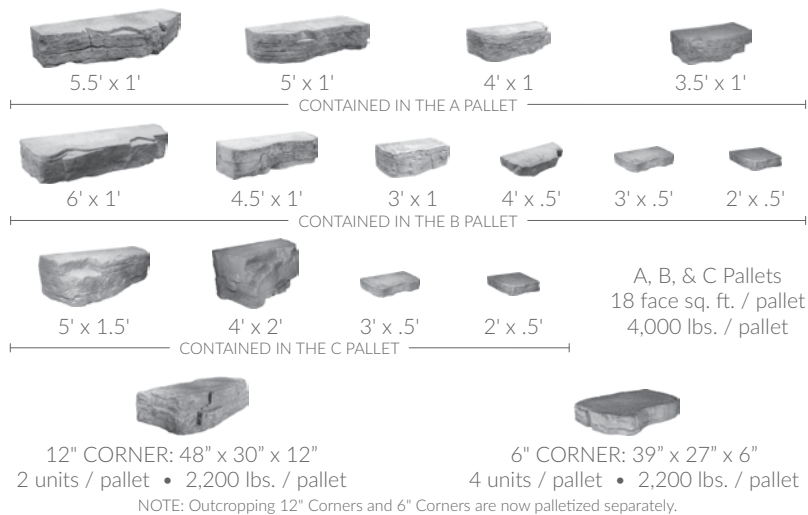
////////// SHAPES \\\\\\\\\\\



CHARCOAL

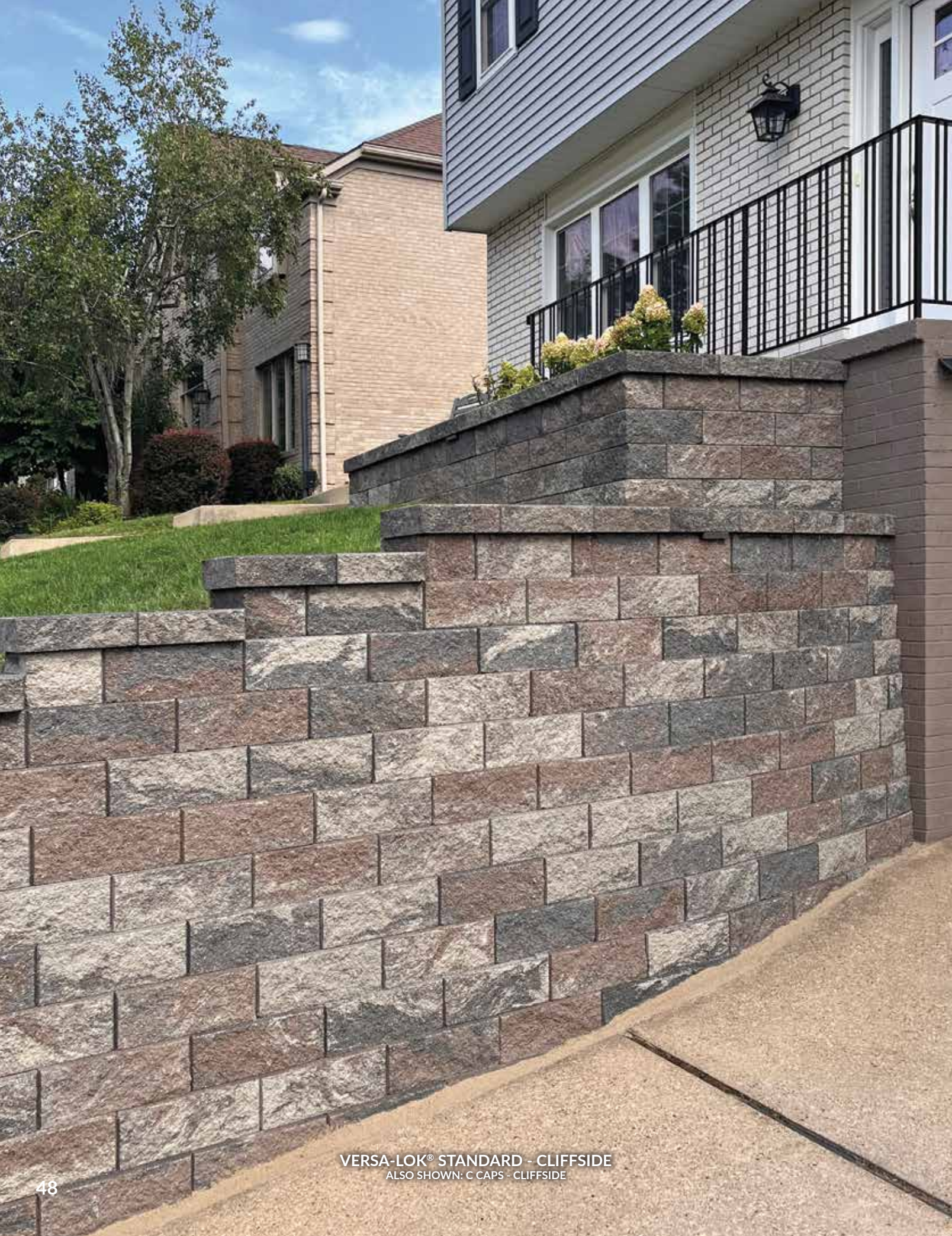


MOUNTAIN RUSTIC



NOTE: Outcropping 12" Corners and 6" Corners are now palletized separately.

The coloring process of our wet-cast products is designed to mimic a wide variation and range similar to natural stone. Color values and intensity will vary between blocks, pallets, and production runs. The colors of products shown are for reference only. Actual colors may vary. Color selections should always be made from actual product samples. All dimensions are nominal.



VERSA-LOK® STANDARD - CLIFFSIDE  
ALSO SHOWN: C CAPS - CLIFFSIDE







VERSA-LOK® SQ. FT. BLOCK - SLATE



# VERSA-LOK® SQ. FT. BLOCK

////////// COLORS \\\\\\\\\\\\\\\\\\\\\\\\\\\\\\\



ALLEGHENY



BLACK WALNUT



DESERT



SARATOGA

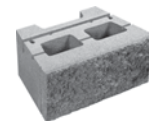


SIERRA

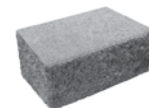


SLATE\*

////////// SHAPES \\\\\\\\\\\\\\\\\\\\\\\\\\\\\\\



18" x 12" x 8"  
24 units / pallet  
2,256 lbs. / pallet



SQ. FT. FULL RETURN CORNER  
18" x 9" x 8"  
24 units / pallet  
1,800 lbs. / pallet

\* Only available in Slate. Other colors are Special Order.

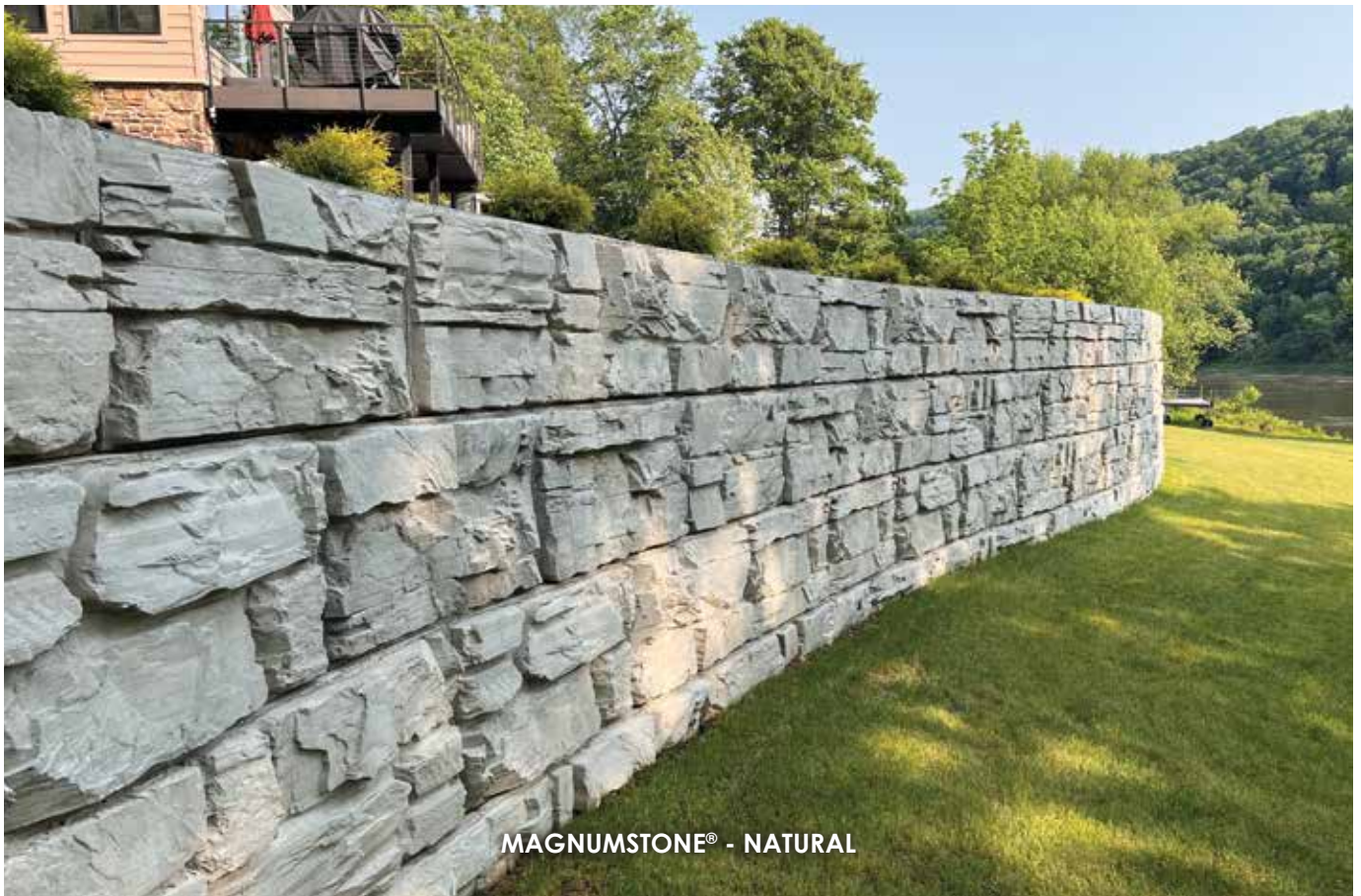
The colors of products shown are for reference only. Actual colors may vary. Color selections should always be made from actual product samples.



**LEARN ABOUT  
CUSTOM STAINING  
FOR A UNIQUE LOOK**



SCAN THIS QR CODE FOR MORE INFORMATION



MAGNUMSTONE® - NATURAL



# MAGNUMSTONE®

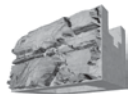
//// COLOR \\\\ // STANDARD BLOCKS \\\\//



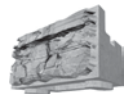
NATURAL



**STANDARD**  
48" x 25" x 24"  
2 units / pallet  
2,610 lbs. / pallet



**BASE**  
48" x 25" x 24"  
2 units / pallet  
2,590 lbs. / pallet



**TOP**  
48" x 25" x 24"  
2 units / pallet  
2,400 lbs. / pallet



**HALF-WIDE**  
24" x 25" x 24"  
4 units / pallet  
2,920 lbs. / pallet



**HALF-WIDE BASE**  
24" x 25" x 24"  
4 units / pallet  
2,840 lbs. / pallet

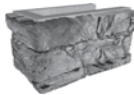


**HALF-WIDE TOP**  
24" x 25" x 24"  
4 units / pallet  
2,720 lbs. / pallet

//////////////////////////////////// CORNER BLOCKS \\\\//////////////////////////////////// // ACCESSORIES \\\\//



**FULL RETURN CORNER**  
47" x 23" x 24"  
2 units / pallet  
3,400 lbs. / pallet  
Left & Right Available



**FULL RETURN CORNER BASE**  
47" x 23" x 24"  
2 units / pallet  
3,400 lbs. / pallet  
Left & Right Available



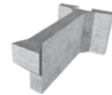
**FULL RETURN CORNER TOP**  
47" x 23" x 24"  
2 units / pallet  
3,200 lbs. / pallet  
Left & Right Available



**UNIVERSAL END CORNER**  
4"-9" x 28" x 24"  
2 units / pallet  
540 lbs. / pallet



**2 FT. EXTENDER**  
24" x 24" x 30"  
2 units / pallet  
1,146 lbs. / pallet



**4 FT. EXTENDER**  
24" x 48" x 30"  
2 units / pallet  
1,600 lbs. / pallet



**STEP / CAP**  
48" x 24" x 6"  
6 units / pallet  
3,480 lbs. / pallet

//////////////////////////////////// HALF-HIGH BLOCKS \\\\////////////////////////////////////



**HALF-HIGH STANDARD**  
48" x 25" x 12"  
2 units / pallet  
1,290 lbs. / pallet



**HALF-HIGH BASE**  
48" x 25" x 12"  
2 units / pallet  
1,270 lbs. / pallet



**HALF-HIGH TOP**  
48" x 25" x 12"  
2 units / pallet  
1,180 lbs. / pallet



**HALF-HIGH END CORNER**  
4"-9" x 28" x 12"  
4 units / pallet  
512 lbs. / pallet  
Left & Right Available



**HALF-HIGH 2-SIDED FREESTANDING**  
48" x 26" x 12"  
2 units / pallet  
1,050 lbs. / pallet  
Base Units Available



**HALF-HIGH 3-SIDED FREESTANDING END**  
48" x 26" x 12"  
2 units / pallet  
1,150 lbs. / pallet  
Base Units Available

The colors of products shown are for reference only. Actual colors may vary. Color selections should always be made from actual product samples. All dimensions are nominal.



PRODUCTS SHOWN: C CAPS - ANTHRACITE, DOUBLE BULLNOSE CAPS - ANTHRACITE,  
VERSA-LOK® HARMONY - WEATHERED BLACK WALNUT



# CAPS & COPING

C CAPS & C-2 CAPS.....	56
DOUBLE BULLNOSE CAPS.....	58
LIMESTONE COLUMN CAPS.....	59
MARMIRO STONES® COPING.....	60
ROSETTA® DIMENSIONAL COPING...	61



C CAPS - ESPRESSO  
ALSO SHOWN: VERSA-LOK® STANDARD - DESERT











ROSETTA® DIMENSIONAL COPING - MOUNTAIN RUSTIC  
 ALSO SHOWN: ROSETTA® KODAH - MOUNTAIN RUSTIC



# ROSETTA® DIMENSIONAL COPING

////////// COLORS \\\\\\\\\\\



CHARCOAL



MOUNTAIN RUSTIC

////////// SHAPES \\\\\\\\\\\



24" x 12 1/2" x 2 1/2"



18" x 12 1/2" x 2 1/2"



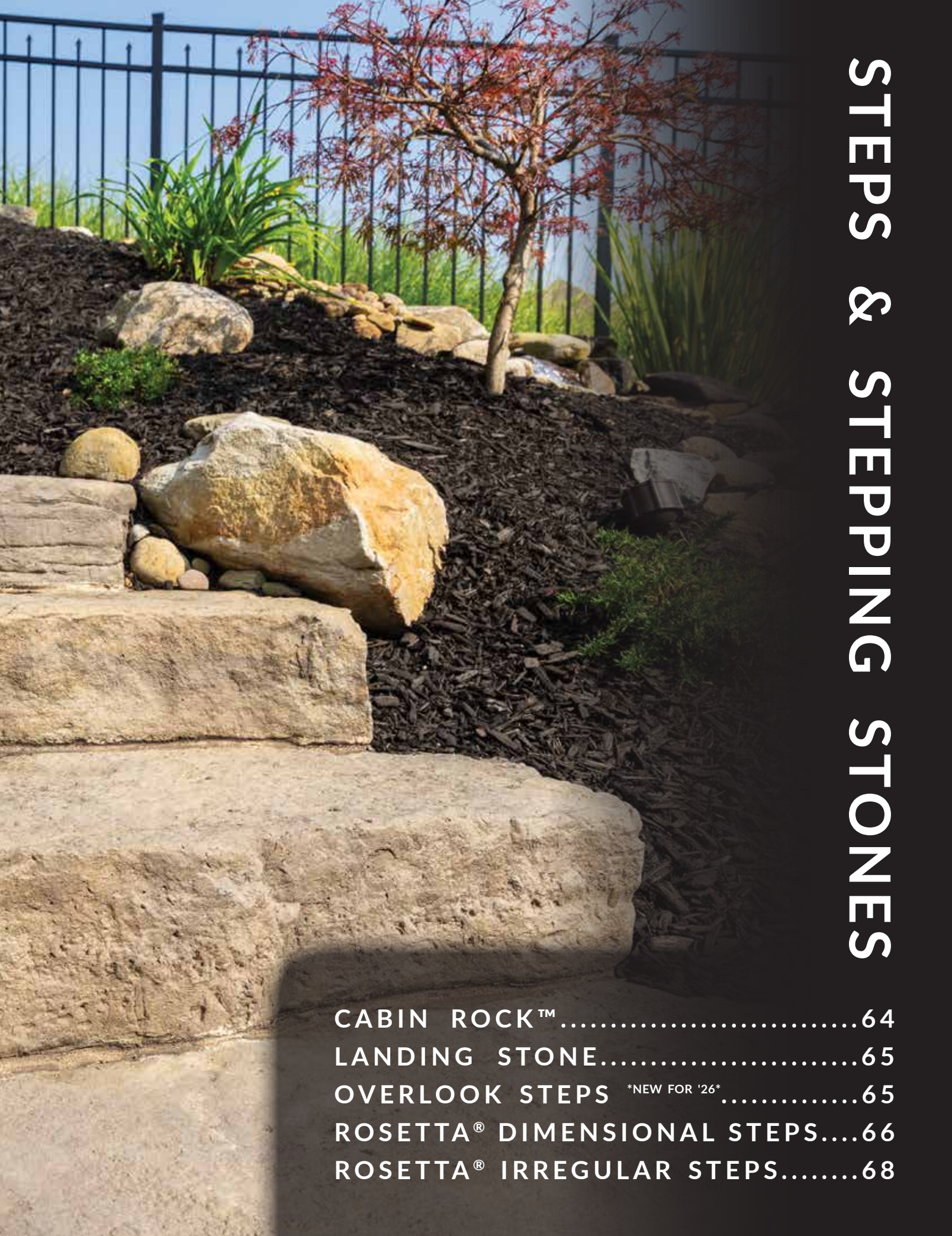
END 19" x 12 1/2" x 2 1/2"

63 ln. / pallet  
 2,000 lbs. / pallet  
 CONTAINED IN PALLET

The coloring process of our wet-cast products is designed to mimic a wide variation and range similar to natural stone. Color values and intensity will vary between blocks, pallets, and production runs. The colors of products shown are for reference only. Actual colors may vary. Color selections should always be made from actual product samples. All dimensions are nominal.



PRODUCTS SHOWN: ROSETTA® IRREGULAR STEPS - MOUNTAIN RUSTIC



# STEPS & STEPPING STONES

CABIN ROCK™ .....	64
LANDING STONE.....	65
OVERLOOK STEPS <small>*NEW FOR '26*</small> .....	65
ROSETTA® DIMENSIONAL STEPS....	66
ROSETTA® IRREGULAR STEPS.....	68



**CABIN ROCK™ - CHARCOAL**  
 ALSO SHOWN: ROSETTA® IRREGULAR STEPS - CHARCOAL

# CABIN ROCK™

/////// COLORS \\\\\\\



CHARCOAL



MOUNTAIN RUSTIC

/////// SHAPES \\\\\\\



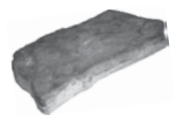
54" x 22" x 3"



42" x 26" x 3"

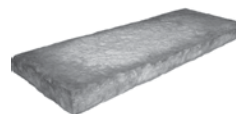


48" x 28" x 3"



48" x 24" x 3"

4 units / pallet  
 853 lbs. / pallet  
 CONTAINED IN PALLET



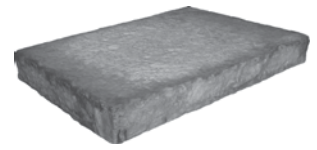
DIMENSIONAL CABIN ROCK  
 48" x 18" x 3"  
 6 units / pallet  
 1,365 lbs. / pallet

# LANDING STONE

LANDING STONE & OVERLOOK STEPS



////////// SHAPES \\\\\\\\\\\



48" x 30" x 7"  
1 unit / pallet  
880 lbs. / pallet

////////// COLORS \\\\\\\\\\\



CHARCOAL



MOUNTAIN RUSTIC



# OVERLOOK STEPS \*NEW FOR '26\*



////////// SHAPES \\\\\\\\\\\



3' STEP  
36" x 16" x 6"  
4 units / pallet  
1,120 lbs. / pallet



4' STEP  
48" x 16" x 6"  
4 units / pallet  
1,492 lbs. / pallet



5' STEP  
60" x 16" x 6"  
4 units / pallet  
1,868 lbs. / pallet



6' STEP  
72" x 16" x 6"  
2 units / pallet  
1,120 lbs. / pallet

////////// COLORS \\\\\\\\\\\



CHARCOAL



MOUNTAIN RUSTIC



STEPS & STEPPING STONES

The coloring process of our wet-cast products is designed to mimic a wide variation and range similar to natural stone. Color values and intensity will vary between blocks, pallets, and production runs. The colors of products shown are for reference only. Actual colors may vary. Color selections should always be made from actual product samples. All dimensions are nominal.



ROSETTA® 4' DIMENSIONAL STEPS - CHARCOAL

ALSO SHOWN: VERSA-LOK® STANDARD - SLATE, C CAPS - ANTHRACITE, GRANDVIEW™ - SLATE, HOLLAND PG PLUS - ANTHRACITE



ROSETTA® 6' DIMENSIONAL STEPS - MOUNTAIN RUSTIC  
ALSO SHOWN: ROSETTA® OUTCROPPING - MOUNTAIN RUSTIC



# ROSETTA® DIMENSIONAL STEPS

////////// COLORS \\\\\\\\\\\



CHARCOAL

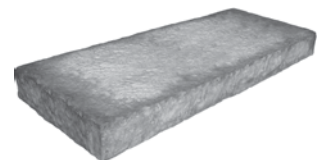


MOUNTAIN RUSTIC

////////// SHAPES \\\\\\\\\\\



4 FT. STEPS  
48" x 18" x 7"  
4 units / pallet  
1,820 lbs. / pallet



6 FT. STEPS  
72" x 30" x 7"  
2 units / pallet  
2,640 lbs. / pallet

The coloring process of our wet-cast products is designed to mimic a wide variation and range similar to natural stone. Color values and intensity will vary between blocks, pallets, and production runs. The colors of products shown are for reference only. Actual colors may vary. Color selections should always be made from actual product samples. All dimensions are nominal.



ROSETTA® 4' IRREGULAR STEPS - CHARCOAL  
ALSO SHOWN: ROSETTA® OUTCROPPING - CHARCOAL



ROSETTA® 4' IRREGULAR STEPS - MOUNTAIN RUSTIC  
 ALSO SHOWN: CABIN ROCK™ - MOUNTAIN RUSTIC



# ROSETTA® IRREGULAR STEPS

////////// COLORS \\\\\\\\\\\



CHARCOAL



MOUNTAIN RUSTIC

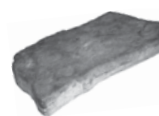
////////// SHAPES \\\\\\\\\\\



54" x 22" x 7"



48" x 28" x 7"



48" x 24" x 7"



42" x 26" x 7"

4 FT. STEPS

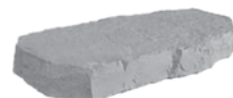
4 units / pallet  
 2,013 lbs. / pallet  
 CONTAINED IN PALLET



72" x 29" x 7"



72" x 29" x 7"



72" x 29" x 7"

6 FT. STEPS

3 units / pallet  
 3,900 lbs. / pallet  
 CONTAINED IN PALLET

The coloring process of our wet-cast products is designed to mimic a wide variation and range similar to natural stone. Color values and intensity will vary between blocks, pallets, and production runs. The colors of products shown are for reference only. Actual colors may vary. Color selections should always be made from actual product samples. All dimensions are nominal.

# LAMPUS ONLINE

## INSPIRATION AT YOUR FINGERTIPS



FACEBOOK



HOZZ



INSTAGRAM



LINKEDIN



PINTEREST



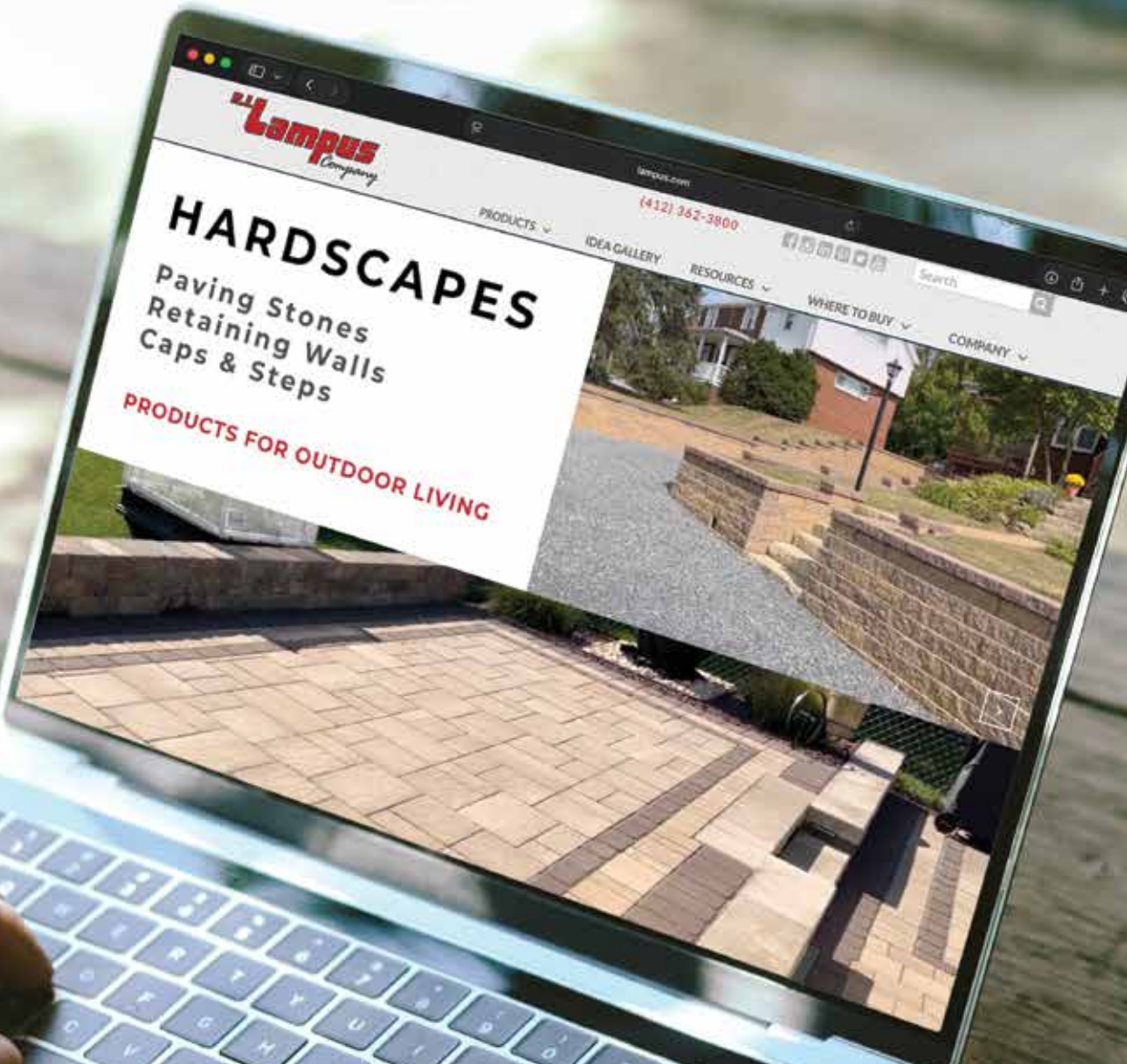
TWITTER



YOUTUBE



SCAN THIS QR CODE  
TO VISIT LAMPUS.COM



# TRAINING PROGRAM



We are pushing industry development to a new level with our expansive training center. We offer learning opportunities for hardscapes and masonry in an effort to help grow and strengthen our industry. With support ranging from classroom presentations to hands-on trainings, you can gain new perspectives and real-world experience to keep your teams informed and prepared for success.

Can't make it to our location? We also have on-site training opportunities available. Call us, or email [marketing@lampus.com](mailto:marketing@lampus.com) for more information.

## INVEST IN YOUR TEAM!

"The Lampus Training Center is by far the best teaching environment I have been associated with in our industry. Whether you have employees who need to learn the basics or someone wanting the tricks of the trades, this is the place to go."

Don Tapley  
Versa-Lok

"Lampus is on the forefront of servicing and supporting the contractor by being in the trenches, literally, with the Lampus Training Center and On-site Support Program."

Gerry Garcia  
Rosetta Hardscapes



SCAN THIS QR CODE TO VISIT  
[LAMPUS.COM/EVENTS-TRAINING](http://LAMPUS.COM/EVENTS-TRAINING)

## COMFORTABLE CLASSROOM SETTING



## REAL-WORLD HANDS-ON TRAINING



## ON-SITE TRAINING OPPORTUNITIES



# DESIGN SOFTWARE



*Project designed in SketchUp and rendered in Lumion.*



*Project designed in Realtime Landscaping Architect.*

Using 3D design software to conceptualize a project is an invaluable tool for planning, determining dimensions, estimating required materials, and helping homeowners visualize their outdoor living dreams before starting a new project.

We offer a wide range of product textures specifically designed for use in digital design software. Our products are included in Idea Spectrum's Realtime Landscaping Architect, and we are excited to announce that they are available for download from the SketchUp 3D Warehouse.



## VERSA-LOK SOLID SOLUTIONS

Versa-Lok Solid Solutions simplifies the process of estimating and selling retaining walls, columns, and stairs. This software automatically calculates the number of Versa-Lok units and pins required for a project, along with the necessary quantities of geogrid and aggregate. For retaining walls up to 15 feet high, it generates preliminary cross-sections that include geogrid specifications. Additionally, the software allows users to create a professional package for clients, which includes sample details and an order form that can be presented directly to the dealer.



## ROSETTA OUTCROPPING WALL LAYOUT APP

The Outcropping Wall Layout App was created to take the guesswork out of designing an Outcropping wall. This app offers several great features that can enhance your workflow. You can lay out Outcropping walls before installation to save time on the job site, calculate pallet quantities for precise ordering, and print layouts to guide your crew during field installation. Additionally, it allows you to export wall layouts to CAD, integrating them seamlessly into your site plan.



## MAGNUMSTONE GRAVITY WALL ESTIMATOR

The Gravity Wall Estimator is a web-based tool that helps users quickly calculate the materials needed for constructing gravity retaining walls. By simply entering the approximate height and length of the wall, users receive an instant estimate of required materials.

MagnumStone also offers a Retaining Wall Design & Analysis Software program designed with the Engineer in mind.



## REALTIME LANDSCAPING ARCHITECT

Realtime Landscaping Architect is a professional landscape design software that allows you to design nearly anything you can imagine including structures, decks, patios, retaining walls, water features, outdoor living features, plantings, and much more!

This design software also features the Lampus line of hardscape products to allow you to create your custom designs using the textures of our specific products.



## SKETCHUP & 3D WAREHOUSE

SketchUp is a professional design software capable of creating 3D designs from individual blocks to full structures with interior designs. With this program, you can design complete job site plans from simple walkways and walls to full outdoor living spaces.

You can also find our full line of Lampus Hardscape Products available for download in the 3D Warehouse. These tiled textures are easily imported directly into SketchUp.



# PRODUCT RESOURCES



HARDSCAPE CATALOG



PRODUCT WARRANTY



CMHA TECH SPEC GUIDE



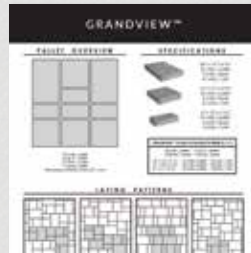
GRAND LEDGE INSTALLATION



VERSA-LOK® INSTALLATION



PRODUCT SPEC GUIDES



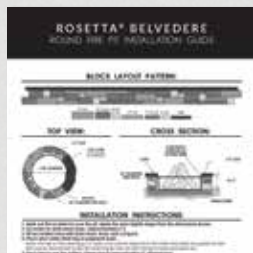
GRANDVIEW SPEC GUIDE



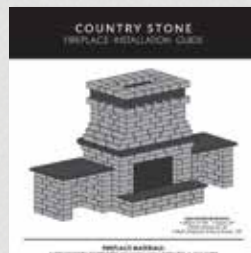
VERSA-LOK® SPEC GUIDE



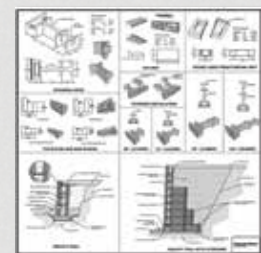
DOUBLE BULLNOSE GUIDE



FIRE PIT GUIDE



FIREPLACE GUIDE



CROSS SECTIONS

Whether you are a seasoned installer or a DIY enthusiast, having the right information readily available can simplify any job. Over the years, we have curated and refined our resource library to provide key information about our products in one convenient location.

Our library includes product-specific installation instructions, detailed palletization guides, technical specifications, and much more! Think of our resource library as your go-to on-line destination for all things hardscape.



# EDGING ACCENTS



## FULL RETURN CORNERS

SHOWN: Each Full Return Corner is installed with the split face vertical.



## FULL RETURN CORNERS

SHOWN: Each Full Return Corner is installed like the base course of a wall.



## COUNTRY STONE

SHOWN: Each Country Stone is split in half resulting in two 6"x8"x4" units.



## COUNTRY STONE

SHOWN: Each Country Stone is split in half resulting in two 4"x12"x4" units.



## ROSETTA® KODAH

SHOWN: Kodah Corners are installed like the base course of a wall.



## CASTLEROK®

SHOWN: Each Castlerok® is installed vertically, alternating the wedges.

NOTE: There are several options for setting and restraining these edging styles. We typically recommend either a typical plastic edge restraint or fiber reinforced concrete edge restraint to make sure these edging options stay in place. Base material will be a determining factor in edge restraint selection. For more detailed instructions visit our Resource Library.

# COLOR SWATCHES

GRANDVIEW



ALLEGHENY



BLACK WALNUT



DESERT



ECLIPSE



RIDGETOP



SIERRA



SLATE



WHITE BIRCH



ALLEGHENY



BLACK WALNUT



CLIFFSIDE



DESERT



ECLIPSE



SARATOGA



SIERRA



SLATE



WHITE BIRCH

**COLOR DISCLAIMER:** The colors of products shown in this catalog are to be used as representations or guidelines only. The photographic and printing processes are not fully capable of reproducing the exact colors of all products. Colors may also change from production run to production run. The coloring process of our wet-cast products is designed to mimic a wide variation and range similar to natural stone. Color values and intensity will vary between blocks, pallets, and production runs. It is extremely important that you do not select colors based exclusively on photographs. Color selections should always be made from actual product samples and viewed under the typical lighting of your specific project. All products are not warranted as always available in all locations, and R.I. Lampus Company may change, amend, add, or discontinue any product shape or color at the sole discretion of R.I. Lampus Company with no prior notification. Not all colors are available in all shapes. Check with the sales department for availability.

To assure random color distribution, it is recommended that individual blocks be mixed from different pallets on the job site. Actual product colors may vary slightly. We recommend that products be viewed at your local distributor location. Special order colors are available upon request.

# PRODUCT WARRANTY



R.I. Lampus Company guarantees that all dry-cast wall and paving stone products meet or exceed the requirements of ASTM C-1372 for walls and ASTM C-936 for paving stones. This warranty is limited to the original purchaser for residential applications installed and maintained according to R.I. Lampus Company installation guidelines or industry standards. Damage sustained as a result of improper installation or design, chemical application, excessive loading, or other misuse is expressly excluded from this warranty. This also includes limestone screenings/dust used as a setting bed underneath paving stones/slabs. Should any dry-cast product prove defective, it will be replaced without cost. Replacement labor and shipping costs are not included in this guarantee. Proof of purchase is required. Retain the warranty tag with batch information for all claims.

R.I. Lampus Company specifically disclaims any warranty relative to color, color consistency, or texture due to natural material variations. Color matching of any replacement units cannot be guaranteed. Efflorescence, a white deposit, common on concrete and masonry surfaces, is a natural occurrence and no warranty or liability is expressed or implied for this condition.



Wet-cast products, including Rosetta® Hardscape Products, are backed by a lifetime warranty from the manufacturer to the original end user for products used in residential applications. This assurance of product quality is applicable where products have been correctly installed to manufacturer's specifications or industry standards. Any properly installed hardscape material that deteriorates due to the concrete in the product not meeting the design strength specification will be replaced by the manufacturer of the product. Replacement labor and shipping costs are not included in this guarantee. Proof of purchase is required. Retain the warranty tag with batch information for all claims. The following items are not covered by this warranty: color variances and the appearance of surface stains resulting from chemical reactions such as efflorescence or differential curing, damage caused by installation, deterioration caused by de-icing salts or fertilizers, damage resulting from sub-grade settlement or movement, hairline cracks that do not affect the structural performance of the products, spalling of less than three percent of the surface area, contact with chemicals or paint, discoloration due to airborne contamination, staining, oxidation, or improper sealing.

**COLOR DISCLAIMER:** The colors of products shown in this catalog are to be used as representations or guidelines only. The photographic and printing processes are not fully capable of reproducing the exact colors of all products. Colors may also change from production run to production run. The coloring process of our wet-cast products is designed to mimic a wide variation and range similar to natural stone. Color values and intensity will vary between blocks, pallets, and production runs. It is extremely important that you do not select colors based exclusively on photographs. Color selections should always be made from actual product samples and viewed under the typical lighting of your specific project. All products are not warranted as always available in all locations, and R.I. Lampus Company may change, amend, add, or discontinue any product shape or color at the sole discretion of R.I. Lampus Company with no prior notification. Not all colors are available in all shapes. Check with the sales department for availability.

To assure random color distribution, it is recommended that individual blocks be mixed from different pallets on the job site. Actual product colors may vary slightly. We recommend that products be viewed at your local distributor location. Special order colors are available upon request.

**PRODUCT MAINTENANCE:** The face of retaining walls can be stained due to mineral and moisture laden soil in the backfill area as well as from the environment. Cleaners and sealers are available for routine wall maintenance. Cleaners and sealers are available for surface enhancements and protection when necessary. Any concrete products used for stair tread applications may require a protective sealant to resist adverse effects of de-icing agents.

Snow can be shoveled or plowed from pavers as readily as other pavements. High strength, low absorption R.I. Lampus Company pavers are more resistant to de-icing salts than ordinary concretes, but they can still be damaged by intense applications. Sealers will help to protect the surface.



# A CENTURY OF SERVICE

---

For over 100 years, R.I. Lampus Company has been a cornerstone of the local Pittsburgh community, shaping landscapes and building dreams with innovative concrete block and hardscape products. Founded in 1924 by R.I. Lampus, we have proudly remained family-owned for four generations, passing down a legacy of quality craftsmanship and a commitment to serving the region.



Starting with humble beginnings in concrete block production, we have consistently pushed boundaries, introducing new products and techniques to enhance outdoor spaces. Lampus was among the first companies in the USA to pioneer the manufacturing and use of hardscape products, opening up a world of possibilities for homeowners and contractors.



Beyond products, we are deeply invested in the industry and community, actively supporting local builders' associations, industry events, and educational initiatives. Our success is a testament to the hard work and dedication of our employees, past and present, and the continued support of our loyal customers and industry partners.

As we embark on our second century, we look forward to continuing our tradition of service, support, and innovation. With a focus on investing in our employees and customers, we are poised to shape the future of hardscaping in Western Pennsylvania and beyond.

# R.I. Lampus Company



816 R.I. LAMPUS AVENUE, SPRINGDALE, PA 15144 • 412.362.3800 • LAMPUS.COM

ROSETTA  
CHANGE YOUR VIEW

MagnumStone  
RETAINING WALLS

VERSA-LOK  
Retaining Wall Systems  
Solid Solutions.

MARMIRO STONES  
CREATED BY NATURE. CRAFTED WITH PRECISION.

Omni-stone®  
Pavers Exclusively by R.I. Lampus Co.

CMHA  
CONCRETE MASONRY & HARDSCAPES ASSOCIATION